

11.18 Acres in Apple Valley

Johnson Rd & Dale Evans Pkwy
Apple Valley, California

11.18 Acres

Directly Across The Street From
1.3 Million Sq. Ft. Wal-Mart Dist.
Facility in Apple Valley

SITE FEATURES:

- *Price Reduced for Immediate Sale, Bring all Offers!!*
- Currently Being Rezoned to Industrial by the City
- APN #: 0463-222-02, 03, 04, 14, 15
- Adjacent to 1.3 Million SF Wal-Mart Distribution Facility
- New Asking Price **\$1.50 PSF**
- 660 Feet of Frontage on Johnson Road
- One Parcel East of Dale Evans Parkway
- All Utilities to Property Except Sewer, Sewer is Nearby

Price Reduced for Immediate Sale!



Steve Harrison
sharrison@lee-assoc.com

Mike Harrison
mharrison@lee-assoc.com

Lee & Associates
3535 Inland Empire Blvd.
Ontario, CA 91764

Phone: 909.989.7771 ~ Fax: 909.944.8250

Lee & Associates
COMMERCIAL REAL ESTATE SERVICES

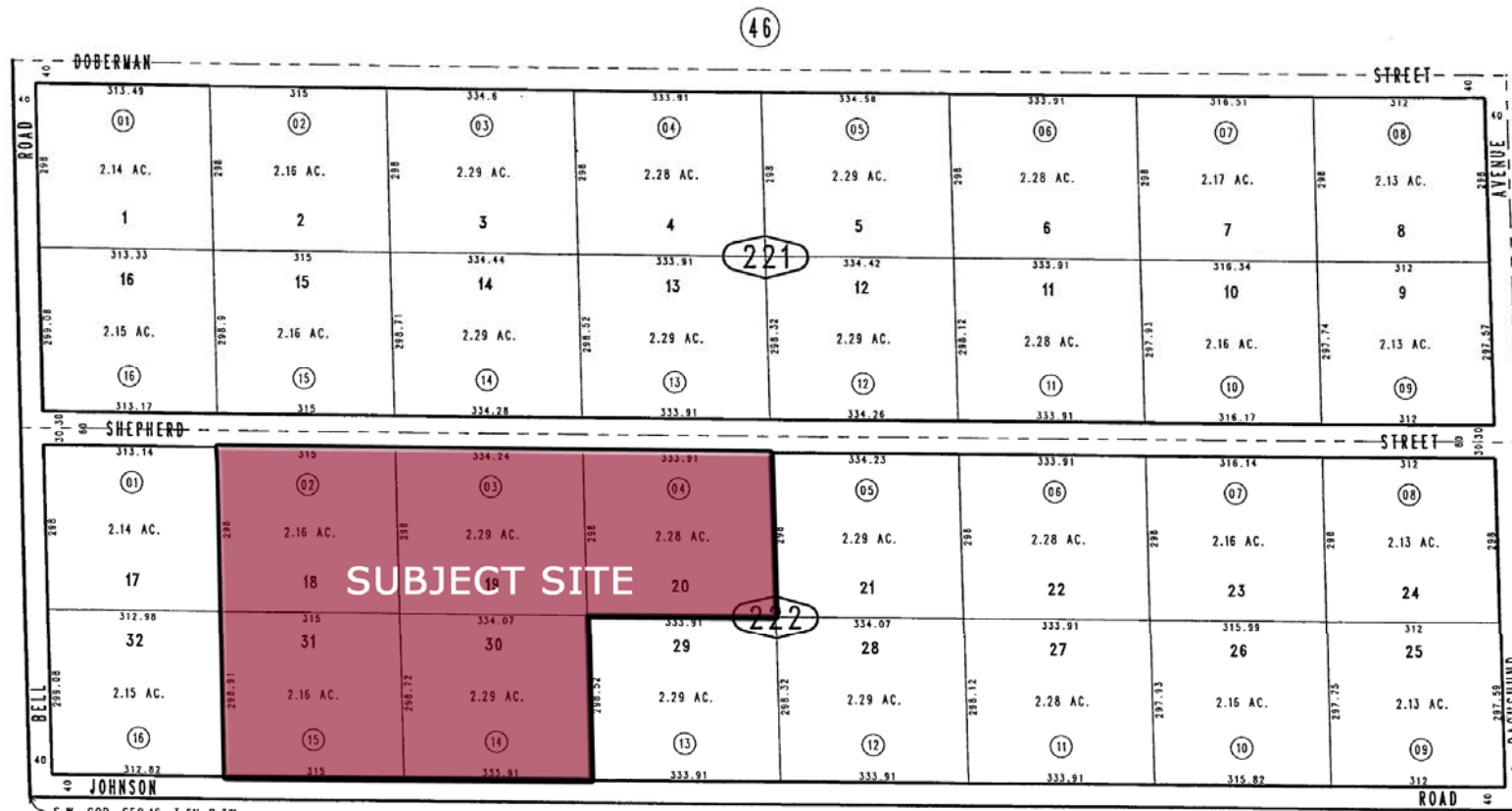
11.18 Acres in Apple Valley

Parcel Map

THIS MAP IS FOR THE PURPOSE
OF AD VALOREM TAXATION ONLY.

Tract No. 5526, M.B. 73/80-81

City of Apple Valley 0463-22
Tax Rate Area
21027



0472
29

Steve Harrison sharrison@lee-assoc.com

Mike Harrison mharrison@lee-assoc.com

