

**TOWN OF
APPLE VALLEY, CALIFORNIA
AGENDA MATTER**

SUBJECT ITEM:

LIGHTING AND LANDSCAPE ASSESSMENT DISTRICT #1- L-9 ENGINEER'S ANNUAL REPORT AND LEVY OF ASSESSMENT FOR FY 2008-2009

SUMMARY STATEMENT:

On June 24, 2008, the Town Council approved Resolution No. 2008-35, directing the filing of the Annual Report for the Apple Valley Landscaping and Lighting District, approved the Engineer's Report and approved Resolution No. 2008-36 to declare the Town's intention to order improvements and to levy and collect assessments for Fiscal Year 2008-2009. The resolution also gave notice of the time and place for the public hearing to discuss the proposed assessment.

As indicated within the attached engineer's report, the proposed amount to be assessed for location L-9 within the assessment district is as follows:

<u>Location No.</u>	<u>Tract No.</u>	<u>No. of lots</u>	<u>Last year's assessment</u>	<u>Proposed assessment (FY 08/09)</u>
• L-9	Tract 9696	58	\$78.00	\$78.00

Recommended Action:

1. Conduct the public hearing.
2. Adopt Resolution No. 2008-46, "A Resolution of the Town Council of the Town of Apple Valley confirming diagram and assessment and levying assessment for fiscal year 2008-2009".

Proposed by: Engineering Division

Item Number: _____

T. M. Approval: _____

Budgeted Item Yes No N/A

RESOLUTION NO. 2008- 46

**A RESOLUTION OF THE TOWN COUNCIL OF THE TOWN
OF APPLE VALLEY CONFIRMING DIAGRAM AND
ASSESSMENT AND LEVYING ASSESSMENT FOR
FISCAL YEAR 2008-2009**

ASSESSMENT DISTRICT NO. 1, L-9
(Pursuant to the Landscaping and Lighting Act of 1972)

The Town Council of the Town of Apple Valley hereby resolves as follows:

Section 1: Pursuant to Chapter 3 of the Landscaping and Lighting Act of 1972, the Town Council directed the Town Engineer, Engineer of Work for Assessment District No. 1, L-9, to prepare and file an annual report for fiscal year 2008-2009.

Section 2: The Engineer of Work filed his annual report with the Town Clerk, and the Town Council adopted its resolution of intention to levy and collect assessments within the assessment district for fiscal year 2008-2009 and set a public hearing to be held on July 10, 2007 at the Council Chamber of the Town Council located at 14955 Dale Evans Parkway, Town of Apple Valley, California. Notice of the hearing was given in the time and manner required by law.

Section 3: At the public hearing, the Town Council afforded to every interested person an opportunity to make a protest to the annual report either in writing or orally, and the Town Council has considered each protest.

Section 4: The Town Council hereby confirms the diagram and assessment as set forth in the annual report of the Engineer of Work and hereby levies the assessment set forth therein for fiscal year 2008-2009.

APPROVED and ADOPTED this 22nd day of July, 2008.

MAYOR

ATTEST:

TOWN CLERK

(SEAL)

ENGINEER'S REPORT
TOWN OF APPLE VALLEY

ASSESSMENT DISTRICT NO. 1, L-9

The undersigned respectfully submits the enclosed report as directed by Town Council.

Brad Miller, P.E.
Engineer of Work

By _____

I HEREBY CERTIFY that the enclosed Engineer's Report, together with Assessment and Assessment Diagram thereto attached, was filed with me on the ____ day of _____, 2008

LaVonda Pearson ,
Town Clerk, Town of Apple Valley,
San Bernardino County,
State of California
By _____

I HEREBY CERTIFY that the enclosed Engineer's Report, together with Assessment and Assessment Diagram thereto attached, was approved and confirmed by the Town Council of the Town of Apple Valley, California, on the ____ day of _____, 2008

LaVonda Pearson ,
Town Clerk, Town of Apple Valley,
San Bernardino County,
State of California
By _____

PART A

PLANS AND SPECIFICATIONS

• **L-9**

TRACT NUMBER: 9096-1

LOCATION: South side Yucca Loma Road at Delaware Road

DESCRIPTION: In summary, the district consists of maintaining an existing landscaped area basically within the parkway along Yucca Loma Road. The parkway is approximately 30' in width from the street curb to the perimeter wall adjacent to Tract 9096-1, from approximately 400' west of Delaware Road to 700' east of Delaware Road.

The area is basically left earthen but includes landscaping, generally of evergreen trees and juniper bushes on Yucca Loma at the entrance of the neighborhood at Delaware Road, and trees planted at 50-feet on center along Yucca Loma Road. The landscaped area currently has a drip irrigation system installed.

PART B
ESTIMATE OF COST FOR FY 2008-2009

L-9 Tract 9696

ITEM DESCRIPTION	ANNUAL COST
1. Maintenance	\$1,800.00
2. Water consumption	\$583.37
3. Electrical Service	0.00
4. Publishing/Notices/Misc.	\$333.39
5. Contingency/Administration	\$163.16
TOTAL	\$2,902.14
Total cost for FY 2007/2008	\$2,902.14
Assessed budget for FY 2007/2008	\$4,524.00
Surplus or Deficit	\$1,621.86
Last Year's Reserve Fund	\$5,820.10
Surplus / Deficit	\$1,621.86
Total Reserve Fund	\$7,441.96
Estimate for FY 2008/2009:	\$4,524.00
Number of lots:	58
Proposed Cost per lot per year (FY2008/2009):	\$78.00
Last year's assessment per lot per year:	\$78.00

PART C

ASSESSMENT DIAGRAM

See Attachments Entitled Assessment Diagrams For:

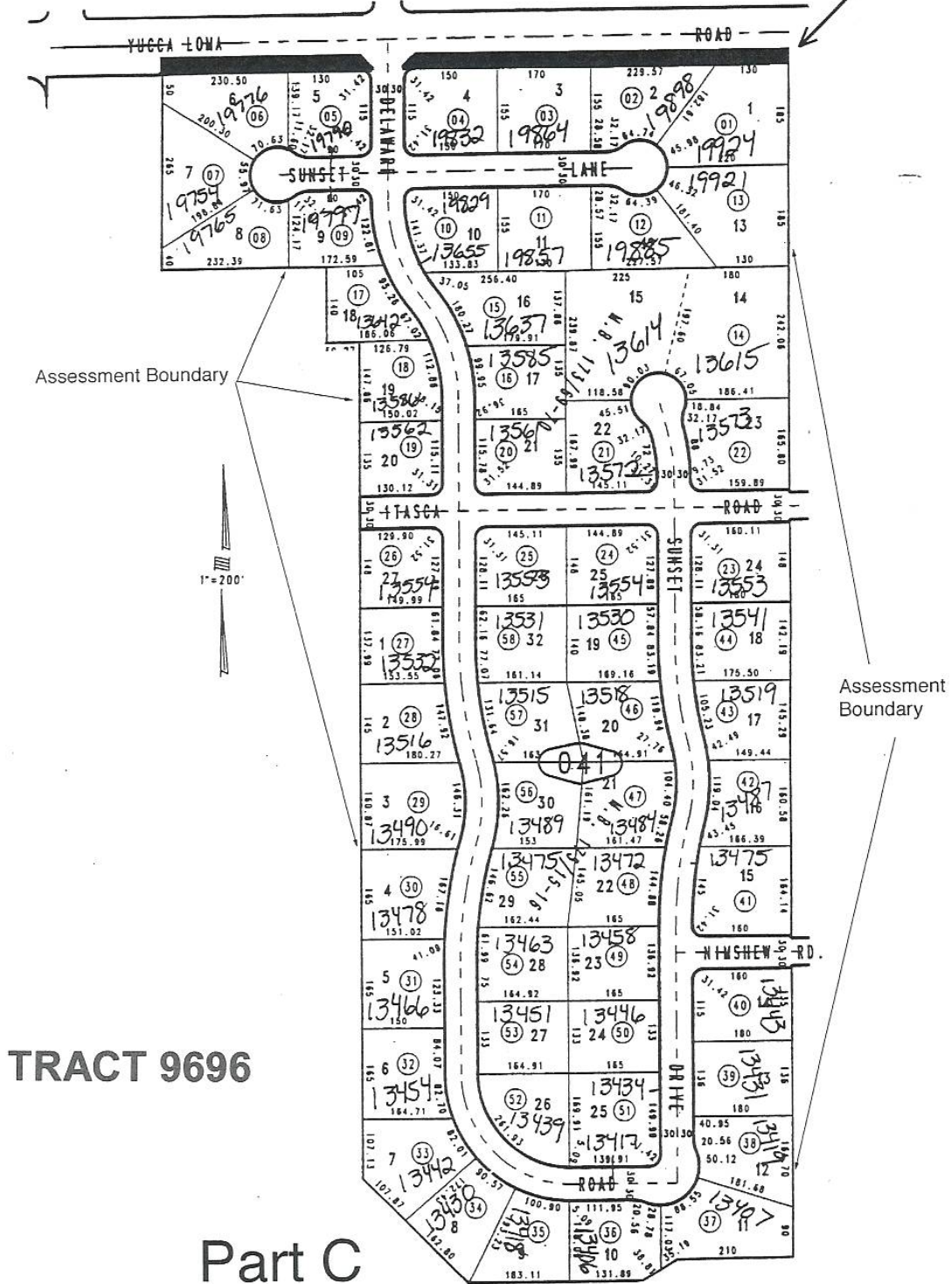
<u>Annexation No.</u>	<u>Tract No.</u>
L-9	Tract 9696

PART D

ASSESSMENT ROLL

<u>Reference Number</u>	<u>Tract No.</u>	<u>Assessor's Parcel Numbers</u>	<u>Assessment per lot per year</u>
L-9	9696	444-681-(Parcels 3-15)	\$78.00
		444-691-(Parcels 1-13)	\$78.00
		444-701-(Parcels 1-31)	\$78.00

EXISTING LANDSCAPED AREA TO BE MAINTAINED



TRACT 9696

Part C Assessment diagram

L-9, Tract 9696

**PART D
ASSESSMENT ROLL**

<u>Reference Number</u>	<u>Tract No.</u>	<u>Assessor's Parcel Numbers</u>	<u>Assessment per lot per year</u>
L-9	9696	444-681-(Parcels 3-15)	\$78.00
		444-691-(Parcels 1-13)	\$78.00
		444-701-(Parcels 1-31)	\$78.00