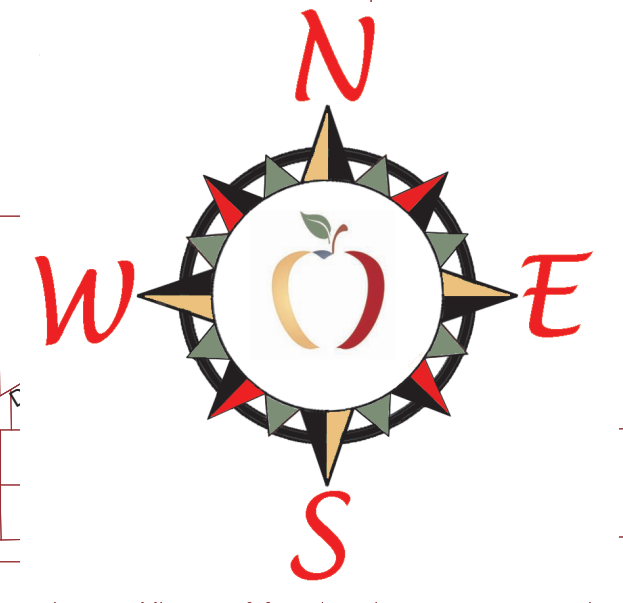


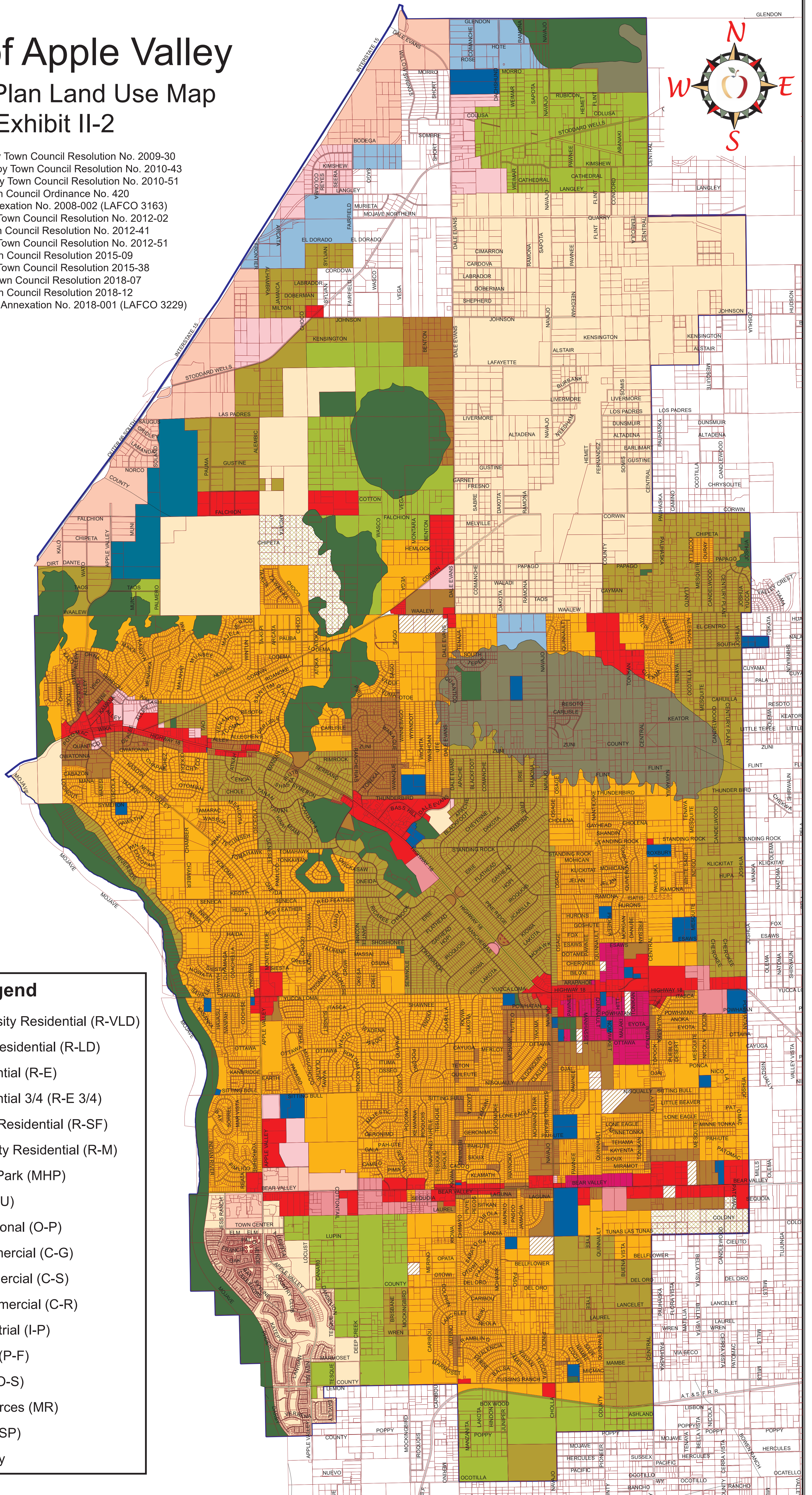
Town of Apple Valley

General Plan Land Use Map

Exhibit II-2



Adopted September 11, 2009 by Town Council Resolution No. 2009-30
 Amended September 14, 2010 by Town Council Resolution No. 2010-43
 Amended December 14, 2010 by Town Council Resolution No. 2010-51
 Amended April 26, 2011 by Town Council Ordinance No. 420
 Amended June 22, 2011 by Annexation No. 2008-002 (LAFCO 3163)
 Amended January 10, 2012 by Town Council Resolution No. 2012-02
 Amended July 10, 2012 by Town Council Resolution No. 2012-41
 Amended October 23, 2012 by Town Council Resolution No. 2012-51
 Amended April 14, 2015 by Town Council Resolution 2015-09
 Amended October 27, 2015 by Town Council Resolution 2015-38
 Amended March 13, 2018 by Town Council Resolution 2018-07
 Amended April 24, 2018 by Town Council Resolution 2018-12
 Amended February 28, 2019 by Annexation No. 2018-001 (LAFCO 3229)



Legend

- Very Low Density Residential (R-VLD)
- Low Density Residential (R-LD)
- Estate Residential (R-E)
- Estate Residential 3/4 (R-E 3/4)
- Single Family Residential (R-SF)
- Medium Density Residential (R-M)
- Mobile Home Park (MHP)
- Mixed Use (M-U)
- Office Professional (O-P)
- General Commercial (C-G)
- Service Commercial (C-S)
- Regional Commercial (C-R)
- Planned Industrial (I-P)
- Public Facility (P-F)
- Open Space (O-S)
- Mineral Resources (MR)
- Specific Plan (SP)
- Town Boundary